

CERTIFICATE OF LOCATION OF GOVERNMENT CORNER

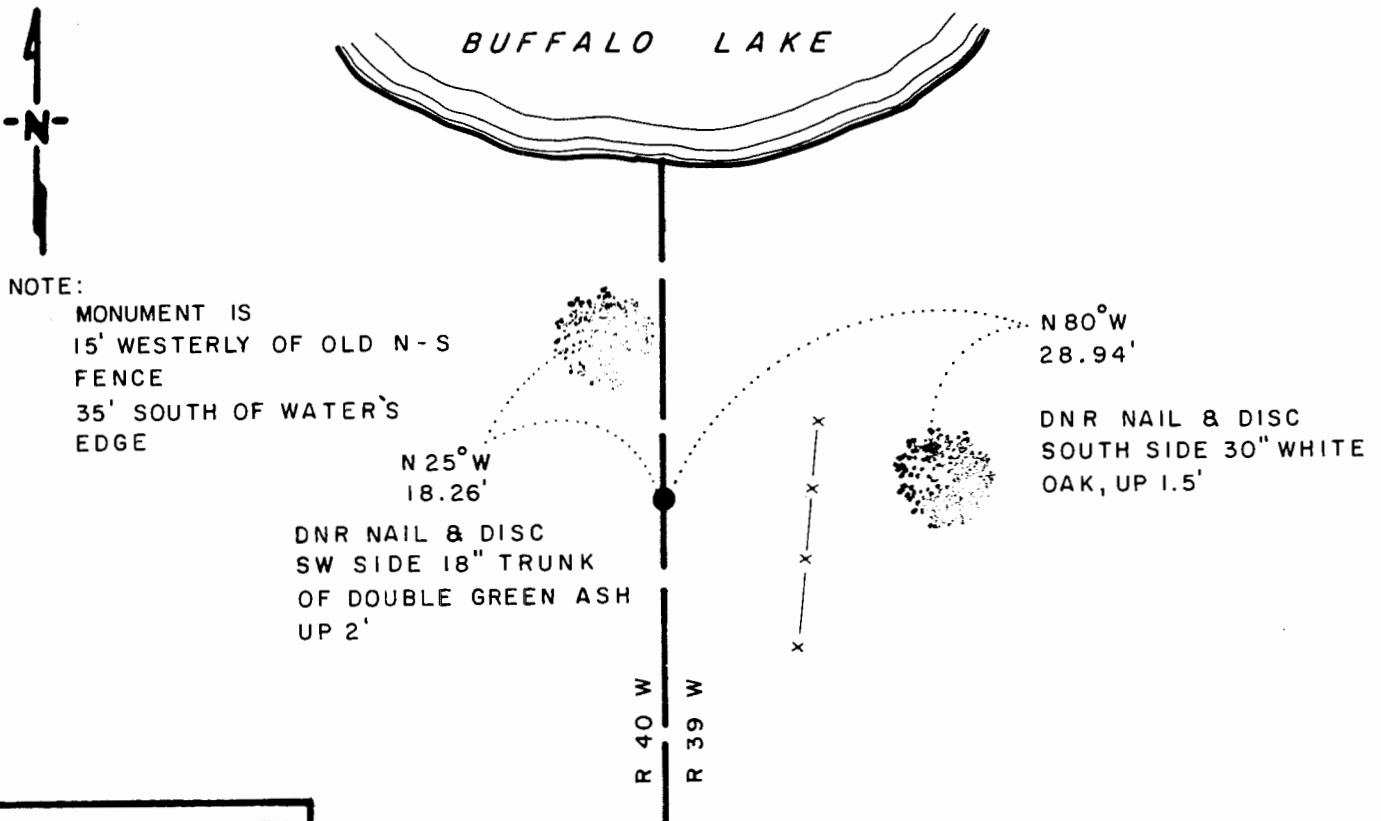
12 MEANDER Corner of Section 13, Township 107 N, Range 40 W, 5th. P.M.

STATE OF MINNESOTA, County of MURRAY

At the corner location shown on the sketch

- On _____ found a _____
- left monument as found, lowered monument, removed monument (explain)
- On 7-23-91 placed a 3/4" x 24" REBAR WITH ALUMINUM CAP STAMPED "DNR SURVEY MARKER", UP 0.20'

SKETCH OF REFERENCE TIES



NOTE:

MONUMENT IS
15' WESTERLY OF OLD N-S
FENCE
35' SOUTH OF WATER'S
EDGE

1983 MURRAY COUNTY
COORDINATE SYSTEM
N = 182,622.696
E = 548,359.637

BEARINGS OBSERVED WITH COMPASS

Statement of evidence relative to this corner location is on back of page

J.B.M. 7-31-91
WAS-01346

I hereby certify that this document and the data contained herein was prepared by me or under my direct supervision.

Bruce W. Sheppard 8-12-91
SIGNATURE DATE
Registration No. 17603

- Land Surveyor, Professional Engineer
- County Surveyor, County Engineer

OFFICE OF THE COUNTY RECORDER

County of MURRAY

I hereby certify that this document was filed in the Co. Recorder's office at _____ M. on the _____ day of AUG 15 1991 A.D., 19 _____

County Recorder James V. Johnson

By _____, Deputy

DOCUMENT NO. _____

Meander Corner #12 of Section 13, Township 107 North, Range 40 West

The DNR Bureau of Engineering contacted the following for survey information:

Secretary of State's Office
Murray County Recorder's Office and Highway Engineer's Office
Chicago and North Western Railway Office in St. Paul

- 1861 U.S. General Land Office notes obtained from the Secretary of State's Office show that an 8" diameter Aspen was marked for corner and the following bearing trees were marked:
8" White Oak, North 80° West, 8 links (5.28 feet)
10" White Ash, North 76° East, 7 links (4.62 feet)
The corner is shown:
at the foot of a hill
- 1907 Surveyor's Record Book A, page 205, obtained from the County Recorder's Office contains a survey by J. W. Woolstencraft. Survey shows a lake in the northwest quarter of Section 18 but does not show corner.
- 1985 July, The DNR Bureau of Engineering searched in area of corner for occupation lines and GLO bearing trees but were unable to find any evidence of corner.
- 1991 May, The DNR Bureau of Engineering found a 50' long fence that bears North 10° East in area of corner. Searched for but found no evidence of the GLO bearing trees. The fence was found to be:
from 9' to 15' east of a line from the east quarter corner of Section 13 to the northeast corner of Section 13
Computed the lost position for corner and found it to be:
692.70 feet (693.00' GLO) from the east quarter corner of Section 13
1946.17 feet (1947.00' GLO) from the northeast corner of Section 13

Analysis of the above information led the DNR Bureau of Engineering to conclude that the computed lost position marks the location of the corner.